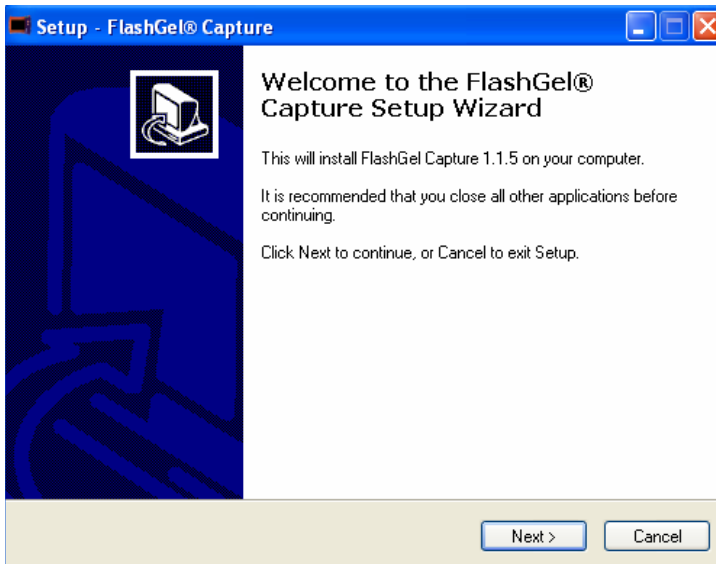


FlashGel® Camera and Capture Software Software Install Instructions and User's Guide

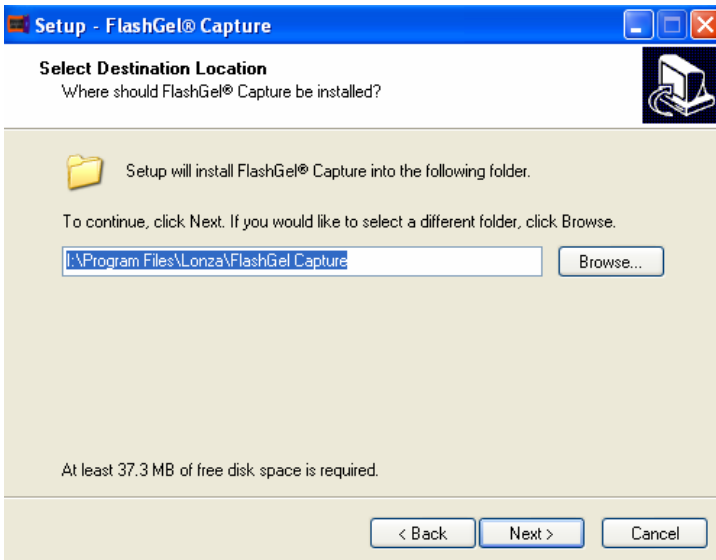
1. Installation

Important - Please do not connect your camera until the installation procedure has successfully completed.

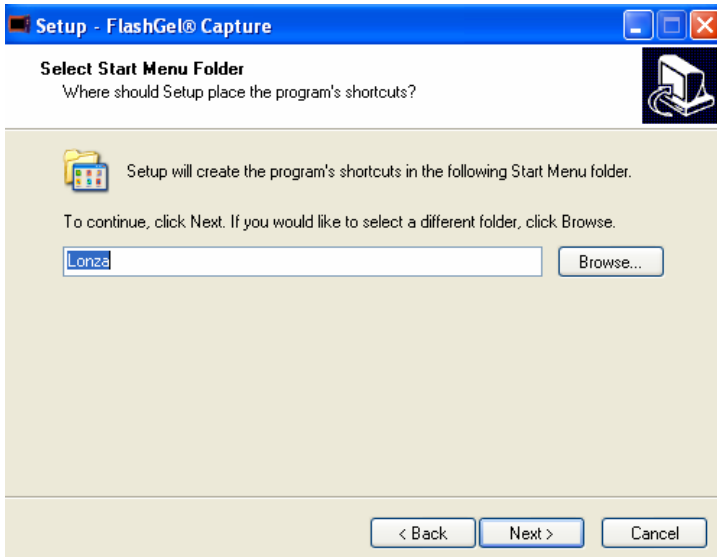


- 1.1 Insert the installation CD and wait for the FlashGel® Capture Setup Wizard to begin. If your computer is not setup to autoplay CDs, open the CD drive and double click the file "**Setup.exe**" to start the installation.

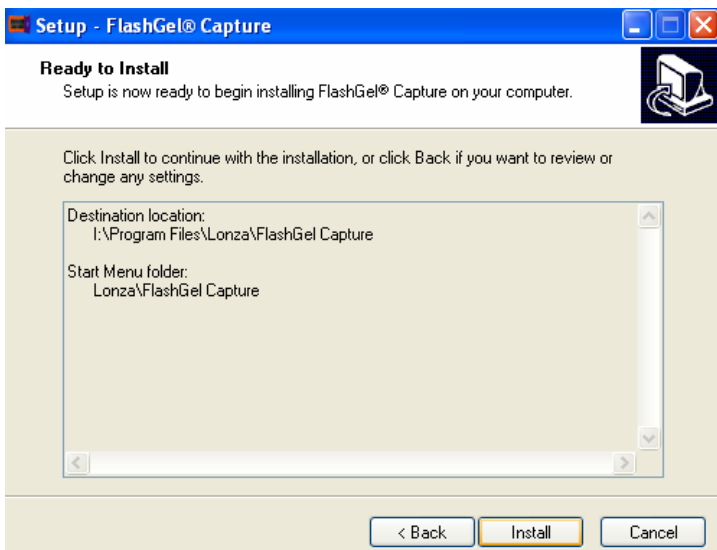
- 1.2 Click **Next** to continue.



- 1.3 The next page asks you to Select the Destination Location. Click **Next** to accept the recommended location or Browse for an alternative location.



1.4 The next page asks you to select the Start Menu Folder for the application's shortcuts. It is recommended that you click **Next** to accept the recommendation.



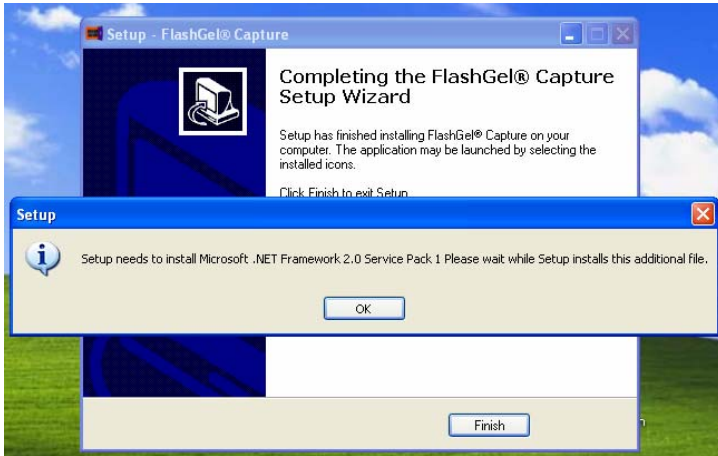
1.5 Setup is now ready to install FlashGel® Capture. Click **Next** to begin the installation.



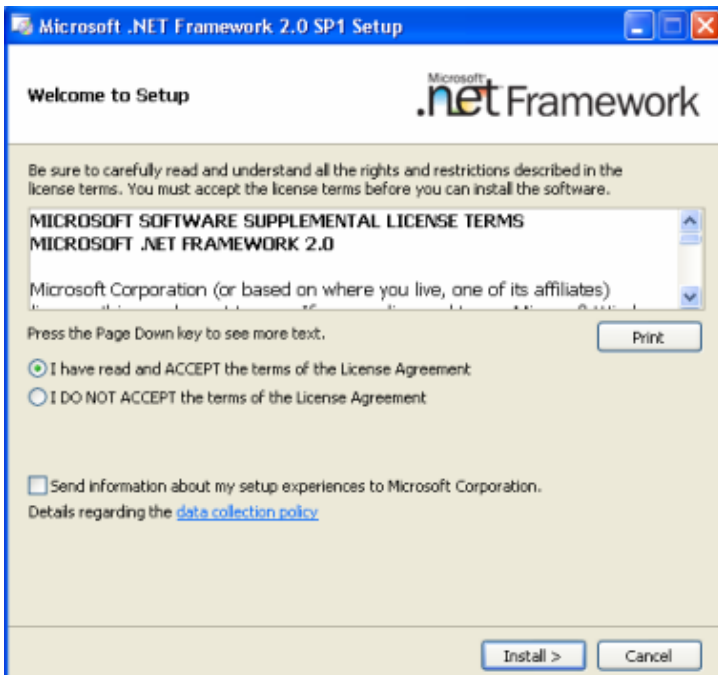
1.6 The installation will now rapidly conclude. Completion will be indicated by the window below. Click **Finish** to exit.

2. Drivers and the Microsoft® .NET Framework

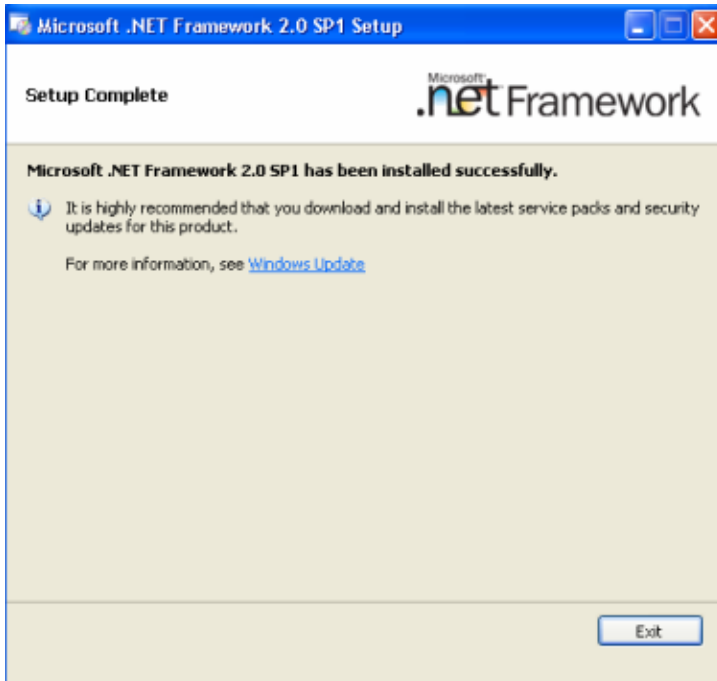
When you click **Finish**, the setup program will automatically search your machine for the items it needs for FlashGel® Camera to operate correctly. This is namely the Microsoft® .NET Framework 2.0, Service Pack 1.



2.1 If setup determines that you need the .NET Framework, the following window will be displayed. Click **OK** to begin this process.



2.2 In a few seconds, you will be asked to read and accept the terms of the .NET Framework license agreement. Click **Install** to continue.

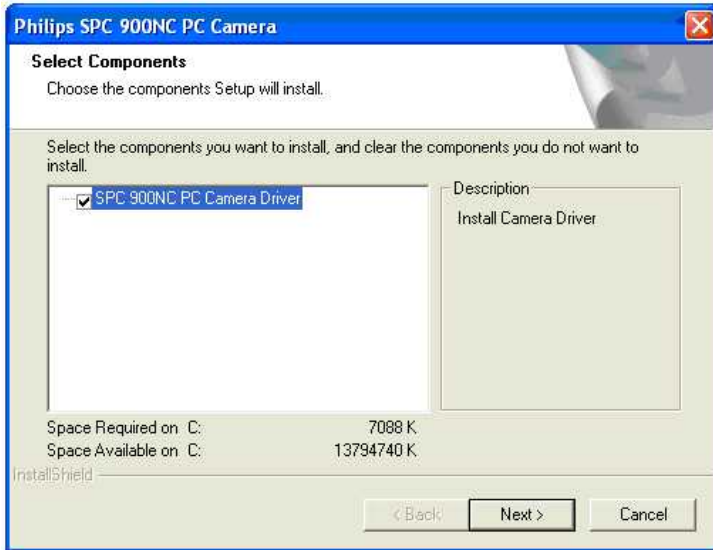


2.3 After several minutes, the .Net Framework should have been successfully installed and you will see the following window. Click **Exit** or close the window.

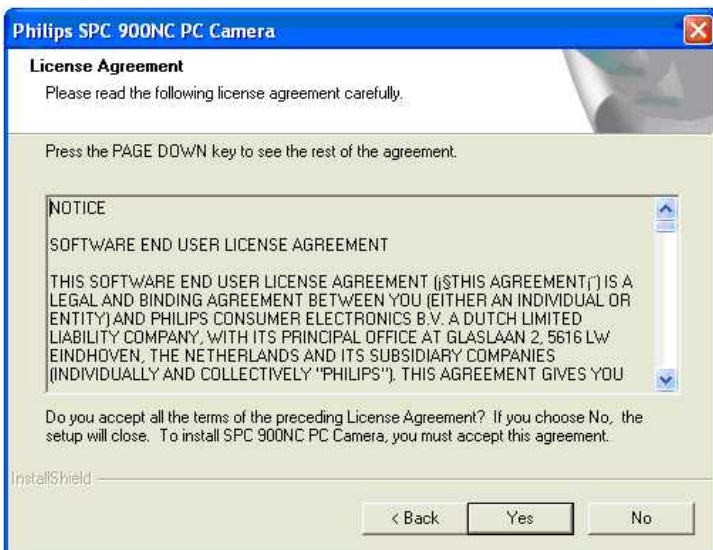
3. Camera Drivers



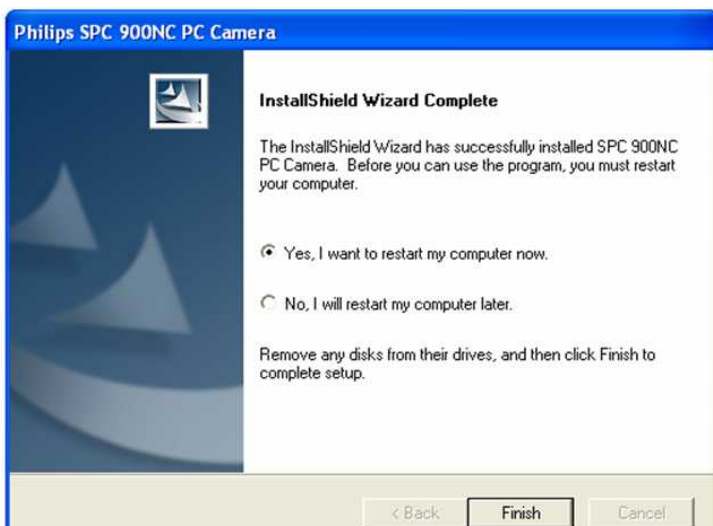
3.1 When the Microsoft® .NET Framework 2.0, Service Pack 1 has been installed, Setup will begin the process of installing the correct camera drivers for your system. Click **OK** to continue



3.2 Click **Next** to start the installation process.

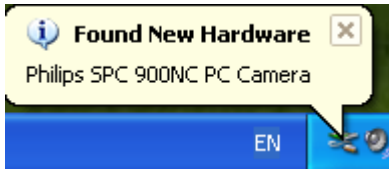


3.3 When presented with the license agreement, please read the terms and click **Yes** to continue.

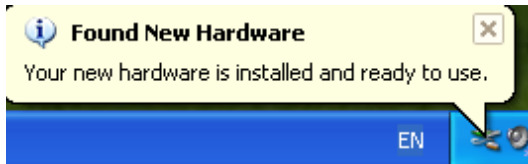


3.4 After a short while, the camera drivers will be installed and you will be prompted to restart your computer. Click **Finish** to close the window.

4. Connecting the Camera



4.1 Please connect the camera to an available USB port. Your computer should now automatically detect the camera and prepare it for use.



4.2 Once your computer detects the camera, it will be ready for use a short while later.

Note – depending of the performance of your computer, this step may take up to a minute to complete. Please wait for the message “Your new hardware is installed and ready to use.” before launching FlashGel® Capture.

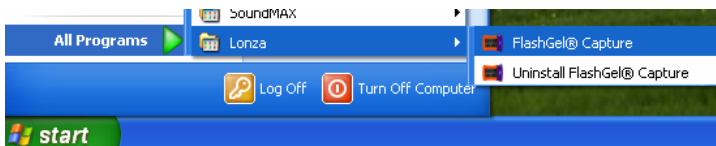
5. Using FlashGel® Capture

5.1 Starting the application

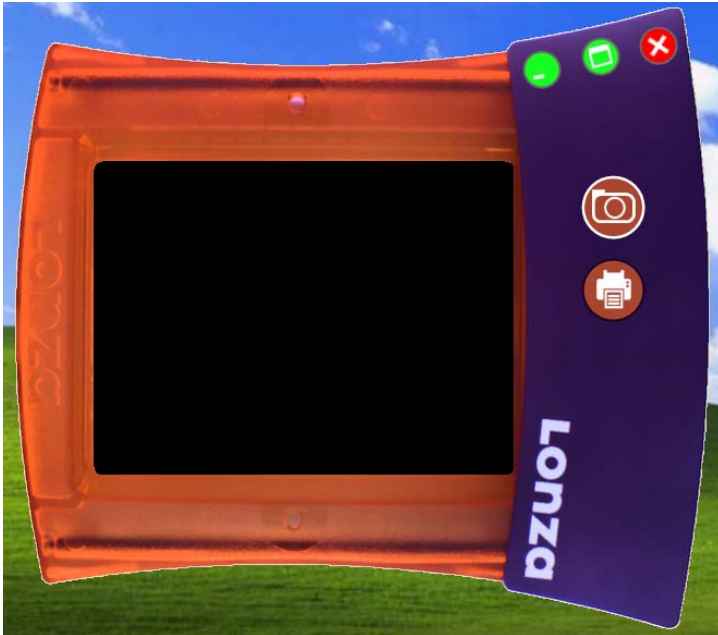
Please ensure the camera is connected, the camera hood is placed securely over the FlashGel® Dock



5.1.1 Launch the application from the desktop icon or Start Menu.



5.2 Viewing a FlashGel® Image



5.2.1 As soon as the application starts, you will see a graphical representation of the FlashGel® Dock on your screen.



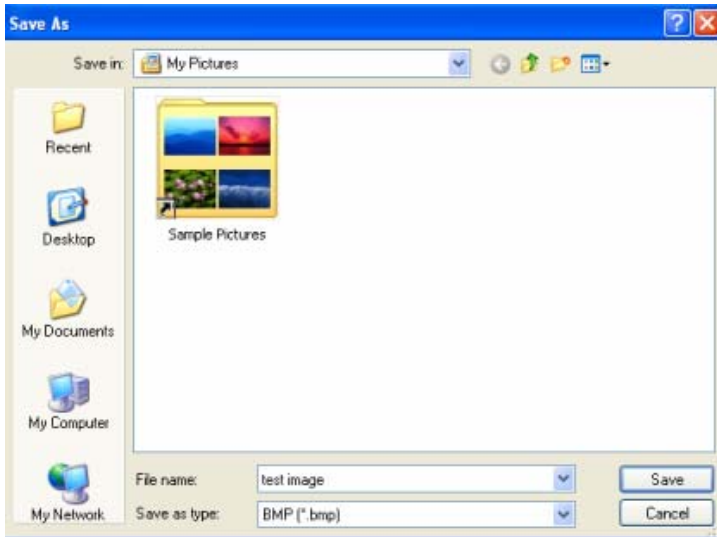
5.2.2 When you turn the light on, the camera will automatically adjust its exposure settings to show an optimized image. You will then be able to monitor the separation of fragments during the course of the experiment.

Note - the camera is setup for the low-light conditions expected when viewing a FlashGel® Cassette. If you remove the hood, the image will appear too bright.

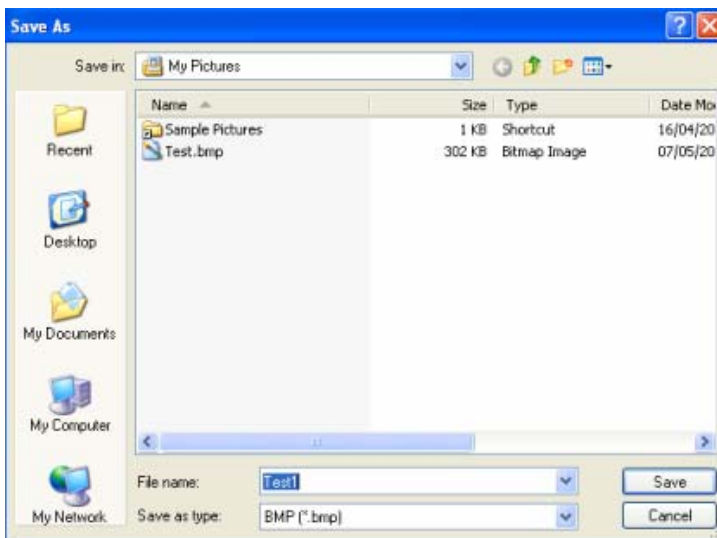
5.3 Capturing and saving an image



5.3.1 To capture a still image at any time, simply click the Capture button.



5.3.2 This action will show a Save As dialog and give you the opportunity to enter a filename and choose between three image types; BMP, JPG and TIF.



5.3.3 On subsequent occasions (and even after restarting the application), FlashGel® Capture will remember the name and location of the last file you saved. Furthermore, the program will append a sequential number to the last filename you saved meaning that you simply have to click Save to continue. For example, if your initial filename was Test, subsequent filenames would be Test1, Test2, Test3 and so on.

5.4 Printing an image



5.4.1 To print an image at any time, simply click the Print button.

5.4.2 This action will show a print dialog that will enable you to select the printer of choice and subsequently print the image.

Ordering Information

| Cat No. | Description | Size/Format |
|---------|----------------------------|---|
| 57040 | FlashGel® Camera | One size |
| 57025 | FlashGel® Dock | One size |
| 57067 | FlashGel® System | Includes: FlashGel® Dock, FlashGel® Camera; box of 9 FlashGel® DNA Cassettes 1.2% agarose, 12+1 well single-tier format; 1 ml FlashGel® Loading Dye and 150 µl FlashGel® DNA Marker. |
| 57026 | FlashGel® DNA Starter Pack | Includes: FlashGel® Dock, box of 9 FlashGel® DNA Cassettes 1.2% agarose, 12+1 well single-tier format; 1 ml FlashGel® Loading Dye and 150 µl FlashGel® DNA Marker. |
| 57024 | FlashGel® RNA Starter Pack | Includes: box of 9 FlashGel® RNA Cassettes 1.2% agarose, 12+1 well single-tier format; Formaldehyde Sample Buffer; FlashGel® RNA Marker; and AccuGENE® Molecular Biology Water. FlashGel® Dock sold separately. |

Camera Specifications

| | |
|-------------------|-----------------------------------|
| Hood dimensions: | 10 cm [W] x 11 cm [L] x 16 cm [H] |
| Camera Type: | Digital/CCD |
| Image File Type: | .JPG, .TIF, .BMP |
| Image Resolution: | 640 x 480 |
| Bit Depth: | 8 bit |

Software/Hardware Requirements

- Microsoft® Windows* 2000/Me/XP/Vista
- Pentium III, 500MHz or equivalent
- 128MB RAM
- Hi-Speed USB - 4 pin USB Type A

*The FlashGel® Capture software is designed for Windows operating systems. The software will function on most Macintosh computers using standard operating system bridge programs.

Warranty and Liability

This product was produced utilizing the highest practical standards of materials, workmanship, and design. Lonza Rockland, Inc. warrants that the product has been tested and will meet or exceed published specifications. This warranty is valid only if the product has been operated and maintained according to the instructions provided.

Lonza Rockland, Inc. warrants this product to be free from defects in materials and workmanship under normal service for one year from date of shipment. If the product proves defective during this period, Lonza Rockland, Inc., will repair or replace it at Lonza Rockland, Inc.'s option, free of charge, if returned to Lonza Rockland, Inc. postage prepaid. This warranty does not cover: damage in transit, damage caused by carelessness, misuse or neglect, normal wear through frequent use, damage caused by solvent corrosion, damage caused by improper handling or user alteration, nor unsatisfactory performance as a result of conditions beyond Lonza Rockland, Inc.'s control. Lonza Rockland, Inc. shall not be liable for any damage or injury to persons or property of any kind arising out of the purchase or use of the product. Any claim made by the buyer against Lonza Rockland, Inc. with respect to the product shall be waived by buyer unless made within thirty days of delivery. In no event shall Lonza Rockland, Inc.'s liability with respect to any such claim exceed the purchase price actually paid by buyer. Lonza Rockland, Inc., shall in no event be liable for incidental nor consequential damages, including without limitation, lost profits, loss of income, loss of business opportunities, loss of use and other related damages, however caused, nor any damage arising from the incorrect use of the product. Each party hereto shall be excused from liability for failure to perform due to any cause beyond its reasonable control, except that this clause shall not operate to relieve buyer of the obligation to pay the purchase price for merchandise delivered.

Manufactured for Lonza Rockland, Inc.

Microsoft is a trademark of Microsoft Corporation.

All other trademarks herein are marks of the Lonza Group or its affiliates.

© 2008 Lonza Rockland, Inc.
All rights reserved.