

ProSieve™ Color Protein Markers

Sharp, Accurate Confirmation of Protein Transfer

ProSieve™ Color Protein Markers are ideal for monitoring protein separation prior to staining and provide accurate confirmation of protein transfer in Western blotting.

■ Benefits

- **Convenient** – Just add water and load (ProSieve™ Color only; not required for ProSieve™ QuadColor™)
- **Sharp** – Multi-colored, readily identifiable band pattern for monitoring electrophoresis and confirming protein transfer
- **Versatile** – Verify protein transfer following Western blotting

ProSieve™ Color Protein Markers are a set of proteins and dyes for use as visible markers in SDS-PAGE gels. During electrophoresis, these markers help monitor the efficiency of separation. In Western blotting, they confirm transfer has occurred from the gel to the membrane. The proteins have been labeled with fluorescent dyes and contain the buffer salts and detergent found in the typical Laemmli buffer system.

■ ProSieve™ Color Protein Marker, 10–190 kDa

- 9 proteins (10, 15, 20, 25, 40, 50, 80, 125, 190 kDa)

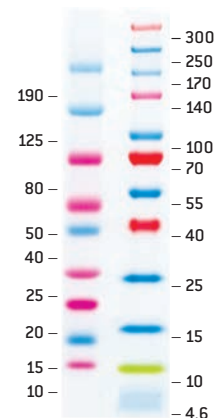
■ ProSieve™ QuadColor™ Protein Marker, 4.6–300 kDa

- 12 proteins (4.6, 10, 15, 25, 40, 55, 70, 100, 140, 170, 250, 300 kDa)

NOTE: Not recommended for accurate protein sizing. For sharp, accurate sizing, use ProSieve™ Protein Markers (page 345).

 -20°C

ProSieve™ Color Protein Markers



Typical Results

ProSieve™ Color Protein Marker Performance vs. Leading Competitors



Markers were run on a Lonza 4–20% PAGEr™ Gold Precast Gel in Tris-Glycine SDS Buffer at 200 V for ~60 minutes.

Lane 1: Bio-Rad® Precision Plus Dual Color Standard

Lane 2: Sigma ColorBurst™ Electrophoresis Marker

Lane 3: Lonza ProSieve™ Color Protein Marker

Lane 4: Lonza ProSieve™ QuadColor™ Protein Marker

Lane 5: Invitrogen BenchMark™ Pre-Stained Ladder

Lane 6: Invitrogen Novex® Sharp Pre-Stained Standard

Lane 7: GE Full Range Rainbow® Marker

Lane 8: Pierce 3-Color Pre-Stained Marker

Lane 9: Lonza ProSieve™ Color Protein Marker

Lane 10: Lonza ProSieve™ QuadColor™ Protein Marker

Lane 11: Invitrogen SeeBlue® Plus 2 Pre-Stained Standard

Lane 12: Bio-Rad® Precision Plus Kaleidoscope™ Standard

Ordering Information – ProSieve™ Color Protein Marker

Cat. No. NA	Cat. No. EU	Product Name	Range	Application	Size
50552	50552	ProSieve™ Color Protein Marker	10 kDa – 190 kDa	10	100 µL
50550	50550	ProSieve™ Color Protein Marker	10 kDa – 190 kDa	50	500 µL
193837	193837	ProSieve™ QuadColor™ Protein Marker	4.6 kDa – 300 kDa	50	500 µL