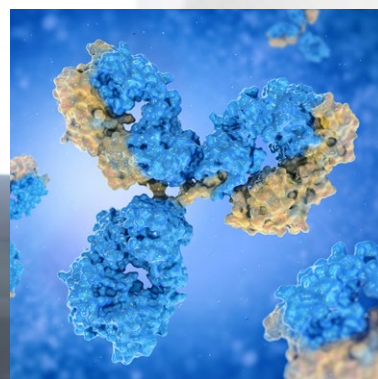


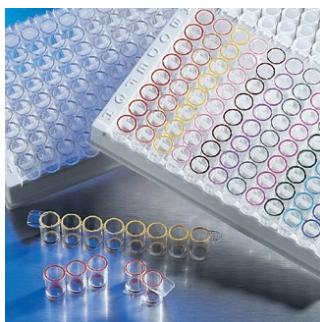
# Corning® ELISA Microplates for Biochemical and Cell-based Applications

Quality, Support, and Service Every Step of the Way



CORNING

## Corning® ELISA Microplates



Corning Stripwell microplates

ELISA assays are accurate, highly sensitive, and specific in identifying protein species. ELISA products are used in a wide range of immunodiagnostic (antigen/antibody) and DNA-based diagnostic test kits. They may also be used for cell-based ELISAs, an immunocytochemistry method to quantify target protein or post-translational modifications of the target protein in cultured cells.

Corning is a leader in manufacturing high-quality, high-performance ELISA microplates and 1 x 8 Corning Stripwell™ microplates for laboratory assays. Corning ELISA microplates have superior lot-to-lot and intra-well consistency for reproducible and reliable results. ELISA microplates enable a common laboratory procedure to be carried out on multiple samples simultaneously. Popular formats include 8-well strips, 96-well microplates, and 384-well microplates.

ELISA microplates are available in clear, black, or white polystyrene with a variety of surface chemistry choices to suit every type of assay:

### SURFACE CHEMISTRIES

#### Medium Binding Surface

- ▶ Hydrophobic
- ▶ Ideal for large, hydrophobic biomolecules (>20kD)
- ▶ Binding capacity: ~250 ng IgG/cm<sup>2</sup>

#### High Binding Surface

- ▶ Hydrophobic and ionic (negatively charged)
- ▶ Ideal for positively charged biomolecules (>10kD)
- ▶ Binding capacity: ~500 ng IgG/cm<sup>2</sup>

#### Corning DNA-BIND® Surface

- ▶ N-oxy succinimide
- ▶ Allows covalent immobilization to amine groups
- ▶ Ideal for DNA, proteins, and small peptides

#### Corning Sulfhydryl-BIND Surface

- ▶ Maleimide
- ▶ Allows covalent immobilization to sulfhydryl groups
- ▶ Ideal for biomolecules possessing an accessible sulfhydryl group

#### Corning Carbo-BIND Surface

- ▶ Hydrazide
- ▶ Allows covalent immobilization to CHO moieties
- ▶ Ideal for antibodies and Fab fragments

#### Corning Nonbinding Surface (NBS)

- ▶ Non-ionic hydrophilic surface (polyethylene oxide-like)
- ▶ Inhibits hydrophobic and ionic interactions to reduce binding
- ▶ Enhances signal-to-noise in homogeneous assays

### CELL-BASED ASSAY SURFACES

#### Tissue Culture-treated Surface

- ▶ Hydrophilic and negatively charged due to incorporation of oxygen ions
- ▶ For attachment and growth of anchorage-dependent cell lines

#### Corning CellBIND® Surface

- ▶ Hydrophilic and negatively charged
- ▶ Enhances cell attachment under difficult conditions
- ▶ Quickly adapts cells to reduced serum or serum-free conditions
- ▶ Improves overall attachment and yield

#### Corning BioCoat™ Surfaces

- ▶ Biological coatings of highly purified extracellular matrix (ECM) proteins
- ▶ Enhances attachment of transformed cell lines, transfected cells (including HEK-293), as well as a variety of primary and stem cells
- ▶ Helps cells stay attached during assay processing
- ▶ Surfaces include Poly-D-Lysine, Fibronectin, Collagen I, Gelatin, Laminin, and Corning Matrigel® matrix

#### Corning PureCoat™ Amine Surfaces

- ▶ Hydrophilic and ionic (positively charged)
- ▶ Ideal for small negatively charged biomolecules
- ▶ For covalent immobilization, use bifunctional crosslinkers

## Corning® 96-well ELISA Microplates



Cat. No.	Type	Color	Surface	Qty/Pk	Qty/Cs
3797	Round-bottom	Clear	Medium binding	25	100
3366	Round-bottom	Clear	High binding	25	100
3789A	Round-bottom	White	Medium binding	25	100
3792	Round-bottom	Black	Medium binding	25	100
3367	Round-bottom	Clear	Medium binding	1	50
3788	Round-bottom, with lid	Clear	Medium binding	20	100
3795	Round-bottom	Clear	Medium binding	25	100
3798	Round-bottom	Clear	Medium binding	25	100
2507	Flat-bottom	Clear	Carbo-BIND	1	50
2509	Flat-bottom	Clear	Sulfhydryl-BIND	1	50
3368	Easy Wash, flat-bottom	Clear	Medium binding	25	100
3369	Easy Wash, flat-bottom	Clear	High binding	25	100
3591	Flat-bottom	Clear	Medium binding	1	50
3590	Flat-bottom	Clear	High binding	1	100
9017	Flat-bottom	Clear	Medium binding	25	100
9018	Flat-bottom	Clear	High binding	25	100
9018BC*	Flat-bottom, with generic bar code	Clear	High binding	25	100
3361	Flat-bottom, with lid	Clear	High binding	20	100
3370	Flat-bottom, with lid	Clear	Medium binding	20	100
3585	Flat-bottom, with lid**	Clear	TC-treated	5	50
3598	Flat-bottom, with lid	Clear	TC-treated	5	100
3912	Flat-bottom	White	Medium binding	25	100
3922	Flat-bottom	White	High binding	25	100
3915	Flat-bottom	Black	Medium binding	25	100
3925	Flat-bottom	Black	High binding	25	100
3632	Flat-bottom	White/Clear	Medium binding	25	100
3631	Flat-bottom	Black/Clear	Medium binding	25	100
3601	Flat-bottom	Black/Clear	High binding	25	100
3603	Flat-bottom, with lid	Black/Clear	TC-treated	1	48
3610	Flat-bottom, with lid	White/Clear	TC-treated	1	48
3340	Flat-bottom, with lid	Black/Clear	Corning CellBIND®	5	50
3809	Flat-bottom, with lid	White/Clear	Corning CellBIND	20	100
3695	Flat-bottom, half area	Clear	Medium binding	25	100
3690	Flat-bottom, half area	Clear	High binding	25	100
3697	Flat-bottom, half area, with lid	Clear	TC-treated	20	100
3693	Flat-bottom, half area	White	Medium binding	25	100
3694	Flat-bottom, half area	Black	Medium binding	25	100
3883	Flat-bottom, half area	White/Clear	Medium binding	25	100
3880	Flat-bottom, half area	Black/Clear	Medium binding	25	100
3882	Flat-bottom, half area, with lid	Black/Clear	TC-treated	20	100
3885	Flat-bottom, half area, with lid	White/Clear	TC-treated	20	100
3641	Flat-bottom	Clear	Nonbinding	25	100
3605	Round-bottom	White	Nonbinding	25	100
3600	Flat-bottom	White	Nonbinding	25	100
3650	Flat-bottom	Black	Nonbinding	25	100
3990	Flat-bottom	White	Nonbinding	5	25
3991	Flat-bottom	Black	Nonbinding	5	25
3642	Flat-bottom	White	Nonbinding	25	100
3686	Flat-bottom	Black	Nonbinding	25	100
3992	Flat-bottom	White	Nonbinding	5	25
3993	Flat-bottom	Black	Nonbinding	5	25

\*Not available in Europe.

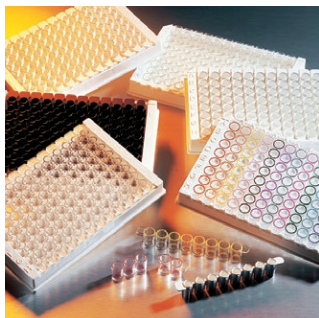
\*\*Special low evaporation lid.

## Corning® 96-well ELISA Microplates (Continued)

Cat. No.	Type	Color	Surface	Qty/Pk	Qty/Cs
3604	Flat-bottom	White/Clear	Nonbinding	25	100
3651	Flat-bottom	Black/Clear	Nonbinding	25	100
3995	Flat-bottom	White/Clear	Nonbinding	5	25
3884	Flat-bottom, half area	White/Clear	Nonbinding	25	100
3994	Flat-bottom, half area	White/Clear	Nonbinding	2	25
351172	Flat-bottom, with lid	Clear	Not treated	1	50
351177	Round-bottom, with lid	Clear	Not treated	1	50
353910	Round-bottom	Clear	Not treated	1	50
351190	Round-bottom	Clear	Not treated	25	100

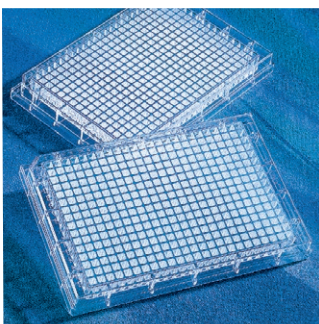
## Corning Stripwell™ 96-well ELISA Microplates and Accessories

Cat. No.	Type	Color	Surface	Qty/Pk	Qty/Cs
2593	Flat-bottom	Clear	Medium binding	25	100
2592	Flat-bottom	Clear	High binding	25	100
3913	Flat-bottom	White	Medium binding	25	100
3923	Flat-bottom	White	High binding	25	100
3914	Flat-bottom	Black	Medium binding	25	100
3924	Flat-bottom	Black	High binding	25	100
2481	Flat-bottom, low volume	Clear	High binding	25	100
2484	Flat-bottom, low volume	White	Medium binding	25	100
2485	Flat-bottom, low volume	White	High binding	25	100
2482	Flat-bottom, low volume	Black	Medium binding	25	100
2483	Flat-bottom, low volume	Black	High binding	25	100
2580	Flat-bottom, strips only, no holder	Clear	High binding	200	800
2506	Flat-bottom	Clear	Corning DNA-BIND®	1	50
2508	Flat-bottom	Clear	Carbo-BIND	1	50
2510	Flat-bottom	Clear	Sulfhydryl-BIND	1	50
2497	Flat-bottom	White	Corning DNA-BIND	1	50
2572	Strip holder "Egg Crate"	N/A	N/A	1	50
2578	96-well strip ejector	N/A	N/A	5	5



### Low Volume Stripwell Microplates

- ▶ Total well volume: 190 µL
- ▶ Recommended working volume: 75 to 125 µL
- ▶ Same height/path length as a standard strip
- ▶ Standard 96-well center-to-center spacing



## Corning 384-well ELISA Microplates

Cat. No.	Type	Color	Surface	Qty/Pk	Qty/Cs
3640	Flat-bottom	Clear	Nonbinding	25	100
3680	Flat-bottom, with lid	Clear	Not treated	20	100
3700	Flat-bottom	Clear	High binding	25	100
3701	Flat-bottom, with lid	Clear	TC-treated	20	100
3702	Flat-bottom	Clear	Not treated	25	100
3702BC	Flat-bottom, with generic bar code	Clear	Not treated	25	100
3572	Flat-bottom	White	Not treated	10	50
3573	Flat-bottom	Black	Not treated	10	50
3574	Flat-bottom	White	Nonbinding	10	50
3574BC	Flat-bottom, with generic bar code	White	Nonbinding	10	50
3575	Flat-bottom	Black	Nonbinding	10	50
3575BC	Flat-bottom, with generic bar code	Black	Nonbinding	10	50
3820	Flat-bottom	Black	Nonbinding	10	50
3821	Flat-bottom	Black	Not treated	10	50
3821BC	Flat-bottom, with generic bar code	Black	Not treated	10	50
3824	Flat-bottom	White	Nonbinding	10	50
3824BC	Flat-bottom, with generic bar code	White	Nonbinding	10	50
3540	Flat-bottom, low volume	Black	Not treated	10	50
3544	Flat-bottom, low volume	Black	Nonbinding	10	50

## Corning® 384-well ELISA Microplates (Continued)

Cat. No.	Type	Color	Surface	Qty/Pk	Qty/Cs
3767	Flat-bottom, low flange	White/clear	Nonbinding	25	100
3766	Flat-bottom, low flange	Black/clear	Nonbinding	25	100
3763	Flat-bottom, low flange	White/clear	Not treated	25	100
3762	Flat-bottom, low flange	Black/clear	Not treated	25	100
3764	Flat-bottom, low flange, with lid	Black/clear	TC-treated	20	100
3764BC	Flat-bottom, low flange, with lid, with generic bar code	Black/clear	TC-treated	20	100
3765	Flat-bottom, with lid	White/clear	TC-treated	20	100
3770	Flat-bottom, low flange, with lid	Black/clear	Corning CellBIND®	20	100
3770BC	Flat-bottom, low flange, with lid, with generic bar code	Black/Clear	Corning CellBIND	20	100
3542	Low volume, with lid	Black/Clear	TC-treated	10	50

## Corning BioCoat™ 96-well ELISA Microplates



Cat. No.	Type	Color	Surface	Qty/Pk	Qty/Cs
354407	Flat-bottom	Clear	Collagen I	5	5
356407	Flat-bottom	Clear	Collagen I	5	50
356698	Flat-bottom	Clear	Collagen I	20	80
354429	Flat-bottom	Clear	Collagen IV	1	50
354461	Flat-bottom	Clear	Poly-D-Lysine	5	5
356461	Flat-bottom	Clear	Poly-D-Lysine	5	50
356690	Flat-bottom	Clear	Poly-D-Lysine	20	80
354409	Flat-bottom	Clear	Fibronectin	1	5
354689	Flat-bottom	Clear	Gelatin	1	5
356689	Flat-bottom	Clear	Gelatin	1	50
354410	Flat-bottom	Clear	Laminin	1	5
354670	Flat-bottom	Clear	Laminin/Fibronectin	1	5
354596	Flat-bottom	Clear	Laminin/Poly-D-Lysine	1	5
354657	Flat-bottom	Clear	Laminin/Poly-L-Ornithine	1	5
354516	Flat-bottom	Clear	Poly-L-Lysine	5	5
356516	Flat-bottom	Clear	Poly-L-Lysine	5	50
354607	Flat-bottom	Clear	Corning Matrigel® matrix	5	5
354519	Flat-bottom	White	Collagen I	5	5
356519	Flat-bottom	White	Collagen I	5	50
356699	Flat-bottom	White	Collagen I	20	80
354620	Flat-bottom	White	Poly-D-Lysine	5	5
356620	Flat-bottom	White	Poly-D-Lysine	5	50
356691	Flat-bottom	White	Poly-D-Lysine	20	80
354650	Flat-bottom	White/Clear	Collagen I	5	5
356650	Flat-bottom	White/Clear	Collagen I	5	50
356701	Flat-bottom	White/Clear	Collagen I	20	80
354651	Flat-bottom	White/Clear	Poly-D-Lysine	5	5
356651	Flat-bottom	White/Clear	Poly-D-Lysine	5	50
356663	Flat-bottom	White/Clear	Poly-D-Lysine	20	80
354649	Flat-bottom	Black/Clear	Collagen I	5	5
356649	Flat-bottom	Black/Clear	Collagen I	5	50
356700	Flat-bottom	Black/Clear	Collagen I	20	80
354640	Flat-bottom	Black/Clear	Poly-D-Lysine	5	5
356640	Flat-bottom	Black/Clear	Poly-D-Lysine	5	50
356692	Flat-bottom	Black/Clear	Poly-D-Lysine	20	80
354717	Flat-bottom	Black/Clear	Corning PureCoat™ Amine	5	5
356717	Flat-bottom	Black/Clear	Corning PureCoat Amine	5	50

## Corning® BioCoat™ 384-well ELISA Microplates



Cat. No.	Type	Color	Surface	Qty/Pk	Qty/Cs
354666	Flat-bottom	Clear	Collagen I	5	5
356666	Flat-bottom	Clear	Collagen I	5	50
354662	Flat-bottom	Clear	Poly-D-Lysine	5	5
356662	Flat-bottom	Clear	Poly-D-Lysine	5	50
354665	Flat-bottom	White	Collagen I	5	5
356665	Flat-bottom	White	Collagen I	5	50
356703	Flat-bottom	White	Collagen I	20	80
354661	Flat-bottom	White	Poly-D-Lysine	5	5
356661	Flat-bottom	White	Poly-D-Lysine	5	50
354664	Flat-bottom	White/Clear	Collagen I	5	5
356664	Flat-bottom	White/Clear	Collagen I	5	50
356702	Flat-bottom	White/Clear	Collagen I	20	80
354660	Flat-bottom	White/Clear	Poly-D-Lysine	5	5
356660	Flat-bottom	White/Clear	Poly-D-Lysine	5	50
354667	Flat-bottom	Black/Clear	Collagen I	5	5
356667	Flat-bottom	Black/Clear	Collagen I	5	50
356705	Flat-bottom	Black/Clear	Collagen I	20	80
354663	Flat-bottom	Black/Clear	Poly-D-Lysine	5	5
356663	Flat-bottom	Black/Clear	Poly-D-Lysine	5	50
356697	Flat-bottom	Black/Clear	Poly-D-Lysine	20	80
354719	Flat-bottom	Black/Clear	Corning PureCoat™ Amine	5	5
356719	Flat-bottom	Black/Clear	Corning PureCoat Amine	5	50

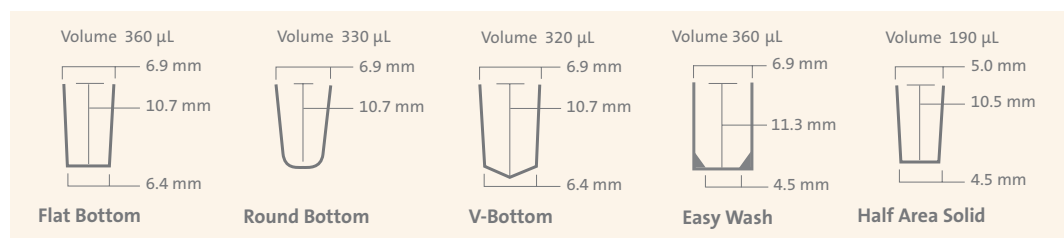
## Complementary Products

Cat. No.	Description
4082	Corning Lambda® Plus 8-channel pipettor, 20 - 200 µL
4086	Corning Lambda Plus 12-channel pipettor, 20 - 200 µL
4803	Corning 1-200 µL universal fit stack rack pipet tips, natural, nonsterile
4867	Corning 100-1000 µL universal fit racked pipet tips, blue, nonsterile
21-040-CM	1L PBS (Phosphate Buffered Saline), 1x [-] calcium, magnesium
21-040-CMR*	1L PBS (Phosphate Buffered Saline), 1x [-] calcium, magnesium
21-040-CV	500 mL PBS (Phosphate Buffered Saline), 1x [-] calcium, magnesium
21-040-CVR*	500 mL PBS (Phosphate Buffered Saline), 1x [-] calcium, magnesium
25-055-CM	1L Water, cell culture grade, tested to USP Sterile Water for Injection specifications
25-055-CV	500 mL Water, cell culture grade, tested to USP Sterile Water for Injection specifications
AM-750UL-RD	Axygen® Axymats sealing mats for ELISA microplates, nonsterile
BF-400-S	Axygen breathable sealing film for tissue culture, sterile
PCR-SP	Axygen AxySeal 80 µm sealing film for short-term storage, nonsterile
PCR-AS-200	Axygen PCR 35 µm aluminum sealing film, nonsterile
4870	Costar® 50 mL reagent reservoirs, sterile
4872	Costar 100 mL reagent reservoirs, sterile
RES-SW-96-HP	Axygen single well reagent reservoir, high profile, nonsterile
RES-MW4-HP	Axygen multiple well reagent reservoir with 4-channel trough, high profile, nonsterile

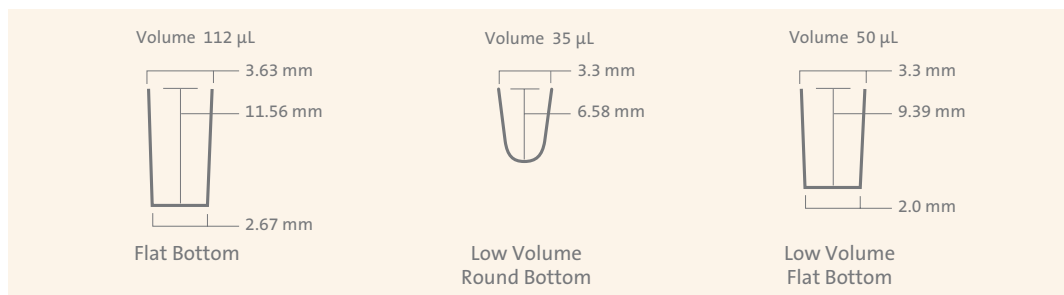
\*Only available in Europe.

For more information on these products, visit [www.corning.com/lifesciences](http://www.corning.com/lifesciences).

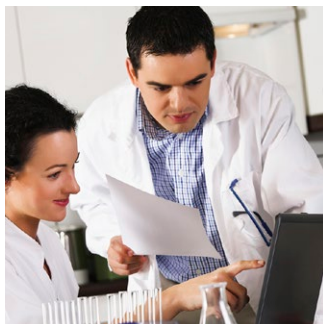
## 96-well Geometry and Dimensions



## 384-well Geometry and Dimensions



## Quality, Support, and Service Every Step of the Way



### Quality You Can Count On

By choosing Corning Life Sciences as your critical component supplier, you can rely on:

#### Rigorous Standards

We continuously invest in our quality processes. Our products are manufactured from USP Class VI materials under the current ISO 9001 standard and FDA Quality System Regulation 21 CFR 820, current good manufacturing practices (cGMP), FDA registered facility for Class 1 Medical Devices.

#### Certification Program

Corning's Certification Program helps you meet your critical component requirements. Detailed product descriptions, drawings, and lot-specific certificates of quality are available to help you satisfy regulatory requirements — and ensure that critical components are manufactured to your requirements each and every time.

#### Service and Support

##### Dedicated Customer Service

Our personalized customer service is the key to a successful long-term relationship. Through one-on-one support, our knowledgeable customer service representatives will answer your questions quickly and help find solutions.

##### Product Customization

Our products can be custom made to your test kit requirements. We can customize surface chemistries, color coding, bar coding, packaging, and certification to meet your needs.

##### Worldwide Sales and Distribution

We have invested in an extensive worldwide sales and distribution network to provide fast, customized, local service in all of the markets we serve. We have local sales and logistics facilities throughout Europe as well as Asia to meet the needs of today's global customers.

##### Lot Allocation Program

For our 1 x 8 Corning® Stripwell™ plates, we can allocate specific lots and lot sizes to meet your needs. This allows you to optimize raw material lots to match production runs, saving valuable time and money. You'll appreciate the improved product traceability that comes with specific lot control.

## Scientific Support

In addition, five ELISA Application Notes are available at [www.corning.com/lifesciences](http://www.corning.com/lifesciences).

- ▶ Immobilization Principles – Selecting the Surface for ELISA Assays (CLS-DD-AN-454)
- ▶ Optimizing the Immobilization of Protein and Other Biomolecules for ELISA Assays (CLS-DD-AN-455)
- ▶ Effective Blocking Procedures in ELISA Assays (CLS-DD-AN-456)
- ▶ Optimizing the Separation Step on 96-well Microplates for ELISA Assays (CLS-DD-AN-457)
- ▶ Selecting the Detection System - Colorimetric, Fluorescent, Luminescent Methods for ELISA Assays (CLS-DD-AN-458)

For more specific information on claims, visit the Certificates page at [www.corning.com/lifesciences](http://www.corning.com/lifesciences).

**Warranty/Disclaimer:** Unless otherwise specified, all products are for research use only. Not intended for use in diagnostic or therapeutic procedures. Not for use in humans. Corning Life Sciences makes no claims regarding the performance of these products for clinical or diagnostic applications.

For additional product or technical information, visit [www.corning.com/lifesciences](http://www.corning.com/lifesciences) or call 800.492.1110. Outside the United States, call +1.978.442.2200 or contact your local Corning sales office.

# CORNING

**Corning Incorporated**  
*Life Sciences*

836 North St.  
Building 300, Suite 3401  
Tewksbury, MA 01876  
t 800.492.1110  
t 978.442.2200  
f 978.442.2476

[www.corning.com/lifesciences](http://www.corning.com/lifesciences)

## ASIA/PACIFIC

**Australia/New Zealand**  
t 61 427286832

**China**  
t 86 21 3338 4338  
f 86 21 3338 4300

**India**  
t 91 124 4604000  
f 91 124 4604099

**Japan**  
t 81 3-3586 1996  
f 81 3-3586 1291

**Korea**  
t 82 2-796-9500  
f 82 2-796-9300

**Singapore**  
t 65 6572-9740  
f 65 6861-2913

**Taiwan**  
t 886 2-2716-0338  
f 886 2-2516-7500

## EUROPE

CSEurope@corning.com

**France**  
t 0800 916 882  
f 0800 918 636

**Germany**  
t 0800 101 1153  
f 0800 101 2427

**The Netherlands**  
t 020 655 79 28  
f 020 659 76 73

**United Kingdom**  
t 0800 376 8660  
f 0800 279 1117

## All Other European Countries

t +31 (0) 206 59 60 51  
f +31 (0) 206 59 76 73

**LATIN AMERICA**  
grupoLA@corning.com

**Brasil**  
t 55 (11) 3089-7400

**Mexico**  
t (52-81) 8158-8400