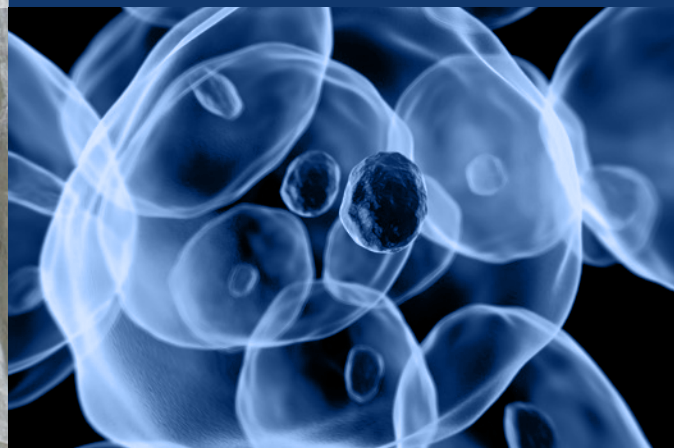




**Thermo Scientific**  
Nunc Cell Factory Systems



committed to perfecting  
**cell culture at every scale**

**Thermo**  
SCIENTIFIC

# The Thermo Scientific Nunc Cell Factory System Difference



## Assured performance from lot-to-lot and format-to-format

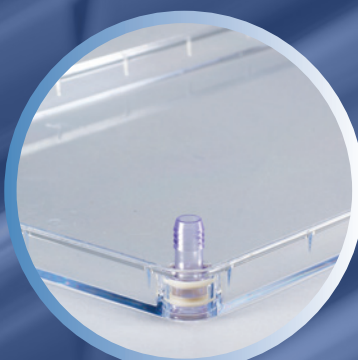
The Thermo Scientific™ Nunclon™ Delta cell culture certification includes verification of monolayer formation and cloning efficiency using three cell lines and one primary cell. Scale up from Thermo Scientific Nunc Dishes and Flasks to the Cell Factory system with consistency, reliability and confidence.

## No adhesive, no solvent, no bubble

The Thermo Scientific™ Nunc™ Cell Factory™ System is constructed of polystyrene chambers and assembled with welded technology; What you see is what you get, no mystery!

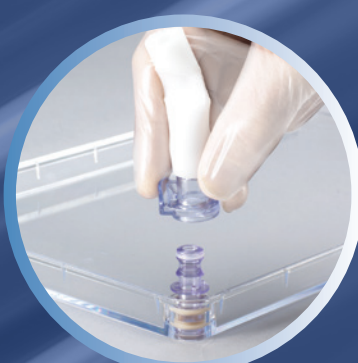
## Entrust your process to a truly aseptic design

The Nunc Cell Factory system's direct plug and play ports options enables you to optimize your process with confidence. No threaded screw caps to wet, exchange or back off which are common causes for contamination. Entrust your process with pre-assembled Cell Factory system solutions.



## 5 manufacturing lines on 3 continents

With local manufacturing on 3 continents, we ensure continuity of supply, so you can rest assured Nunc Cell Factory systems are there when you need them. Regional supply is key to your global expansion.

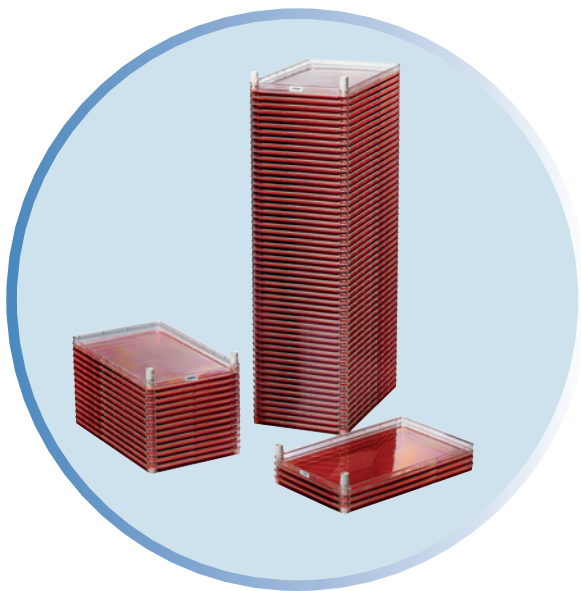


## Customize with alternative port configurations and tubing sets

Further enhance your Cell Factory system with additional port options including 3/8" (1.9mm OD barbed port) and male MPC quick disconnect. Optimize your process with tubing sets pre-assembled directly onto your Cell Factory system.



# Compact, single-use systems for easy scale-up



Nunc Cell Factory systems are simple, multi-layered cell culture solutions for the cultivation of adherent cells

## Standard Cell Factory systems Nunclon Delta Surface. Polystyrene. Sterile

Cat. No.	No. of Layers	Cell Culture Area, cm <sup>2</sup>	Nominal Dimensions LxWxH mm (in)	No. per pack	No. per case
165250	1	632	335 x 205 x 35 (13.2 x 8.1 x 1.4)	1	8
167695	2	1,264	335 x 205 x 53 (13.2 x 8.1 x 2.1)	1	6
140004	4	2,528	335 x 205 x 87 (13.2 x 8.1 x 3.4)	1	10
164327	10	6,320	335 x 205 x 190 (13.2 x 8.1 x 7.5)	1	2
170009	10	6,320	335 x 205 x 190 (13.2 x 8.1 x 7.5)	1	6
139446	40	25,280	335 x 205 x 698 (13.2 x 8.1 x 27.5)	1	2

## High Density Cell Factory systems Nuncleon Delta Surface. Polystyrene. Sterile.

169160	3	1,896	333 x 204 x 54 (13.1 x 8.0 x 2.1)	1	4
169118	13	8,216	333 x 204 x 186 (13.1 x 8.0 x 7.3)	1	3
169102	52	32,864	333 x 204 x 698 (13.1 x 8.0 x 27.5)	1	1

Each Nunc Cell Factory system includes a set of:



White Tyvek<sup>®</sup> adaptor cap  
Cat. No. 167525



Port cover cap, blue  
Cat. No. 170615

# maximize productivity

with automation solutions

Develop a fully commercial scale process using Nunc Cell Factory systems. Equipment options include Automated Cell Factory Manipulator, CO<sub>2</sub> Incubator and Shaker.

The versatile cart and racks system is compatible with all equipment and allows simultaneous processing of 12 CF10/HDCF13 systems or 4 CF40/HDCF52 systems.



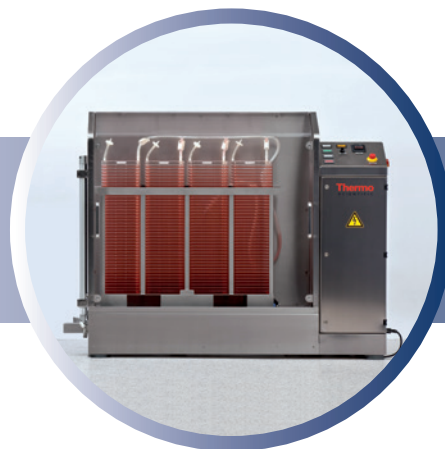
## Thermo Scientific Nunc Automated Cell Factory Manipulator

A fully programmable manipulator that automates the handling of Nunc Cell Factory Systems. Simplify and achieve constant and reliable processes. Designed for use in clean room environments, all functions can be activated by the touch of a button.

Note: A simple component adjustment is needed for use with High Density Cell Factory systems.

## Thermo Scientific Nunc Cell Factory Shaker System

The shaker system offers an automated solution for the detachment of cells from Nunc Cell Factory systems. Eliminates traditional need for shaking and pounding and supports workflow efficiency.



## Thermo Scientific Nunc Cell Factory Incubator

A mobile solution for incubation of 48 CF10/HDCF13 systems or 16 CF40/HDCF52 systems. Available with and without CO<sub>2</sub> control.



For additional information visit on automated solutions: [www.thermoscientific.com/cfequipment](http://www.thermoscientific.com/cfequipment)

[www.thermoscientific.com/cellfactory](http://www.thermoscientific.com/cellfactory)

© 2016 Thermo Fisher Scientific Inc. All rights reserved. Tyvek is a registered trademark of E. I. du Pont de Nemours and Company. All other trademarks are the property of Thermo Fisher Scientific Inc. and its subsidiaries.

**ANZ:** Australia: 1300 735 292, New Zealand: 0800 933 966  
**Asia:** China Toll-free: 800-810-5118 or 400-650-5118; India: +91 22 6716 2200, India Toll-free: 1 800 22 8374; Japan: +81 3 5826 1616; Other Asian countries: 65 68729717  
**Europe:** Austria: +43 1 801 40 0; Belgium: +32 53 73 42 41; Denmark: +45 4631 2000; France: +33 2 2803 2180; Germany: +49 6184 90 6940, Germany Toll-free: 08001-536 376; Italy: +39 02 02 95059 or 434-254-375; Netherlands: +31 76 571 4440; Nordic/Baltic countries/CIS: +358 9 329 100; Russia: +7 (812) 703 42 15; Spain/Portugal: +34 93 223 09 18; Switzerland: +41 44 454 12 12; UK/Ireland: +44 870 609 9203  
**North America:** USA/Canada +1 585 586 8800; USA Toll-free: 800 625 4327  
**South America:** USA sales support: +1 585 586 8800  
**Countries not listed:** +49 6184 90 6940 or +33 2 2803 2180

BRLSPNUNCCF 0216

**Thermo**  
SCIENTIFIC

A Thermo Fisher Scientific Brand