



Testo USB driver

Windows® 7, Windows® 8.1, Windows® 10

Application information



General information

Please take the time to read the Installation Instructions through carefully and make sure you become familiar with how the device operates before using it. Always keep this document close to hand for reference purposes.

Symbols

Symbol	Meaning	Remarks
!	Information	Please pay particular attention to....

Font style

- Terms which you will find on the screen are written in italics.
- Terms which you will find on the screen and which you can “click on” are written in bold.

Trademarks

Microsoft® and Windows® are registered trademarks of the Microsoft Corporation in the USA and/or other countries.

Intel® and Pentium® are trademarks of the Intel Corporation in the USA and/or other countries.

Other trademarks or product names are the property of the respective companies.

Operating Systems

The images are taken from a Windows 7 System. For a detailed description, see the user manual for your Windows operating system.

Contents

General information	2
Contents	3
1. Licence agreement	4
2. Installation	5
3. Virtual COM port settings.....	6
4. Troubleshooting	7

1. Licence Agreement

This is a legally valid contract between you, the end user, and Testo. When you or a person authorised by you opens the sealed CD-ROM package, you recognise the provisions of this contract. If you do not agree with the terms and conditions, you must immediately return the unopened software package with the accompanying items, including all written documents and other containers, to the place from which you bought the software, which will give you a full refund of the purchase price.

Granting of a licence

This licence entitles you to use a copy of the Testo software which was acquired with this licence on a single computer subject to the condition that the software is only ever used on one single computer at any one time. If you have bought multiple licences for the software, you may only have as many copies in use as you have licences. The software is "in use" on a computer if it is loaded in the intermediate memory or RAM or stored on a permanent memory, e.g. a hard disk, of this computer, with the exception that a copy which is installed on a network server for the sole purpose of distribution to other computers is not "in use". If the foreseeable number of users of the software exceeds the number of licences acquired, you must ensure, through the necessary mechanisms or procedures, that the number of persons using the software at the same time does not exceed the number of licences.

Copyright

The software is protected against copying by copyright laws, international agreements and other legal provisions. You may not copy the software, the handbooks for the product or any other written documents accompanying the software. The software may not be licensed, let or leased to third parties. If the software is not fitted with a dongle, you may either make a single copy of the software solely for backup or archiving purposes or transfer the software to a single hard disk, provided that you keep the original solely for backup or archiving purposes. You are not permitted to reverse engineer, decompile or disassemble the software. Testo SE & Co. KGaA, Lenzkirch, may take legal action against you for any breach of property rights by you or by any person acting, directly or indirectly, under your authority.

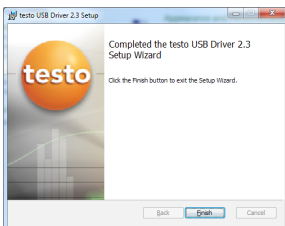
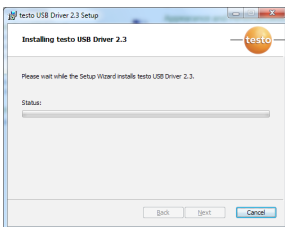
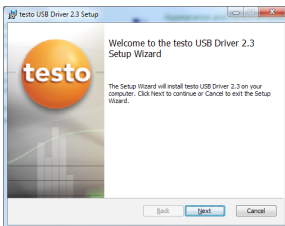
Limited guarantee

Testo guarantees for a period of 90 days from purchase of the software by the buyer, or for a longer minimum period if such a period is prescribed by the laws of the country in which the product is sold, that the software conforms to general standards defined in the accompanying documentation. Testo expressly does not guarantee that the software will operate without interruption or without errors. Should the software not function according to the accompanying documentation when in normal use, the buyer will have the right to return the software to Testo within the warranty period and to inform Testo in writing of the deficient functional capacity. Testo will only be bound to make a functional copy of the software available to the buyer within a reasonable period of time from receipt of the notification of functional incapacity or, should a copy not be available for any reason, to reimburse the buyer for the purchase price.

Any warranty in respect of the software, the associated manuals and written material extending above and beyond the limited guarantee outlined above is excluded.

Neither Testo nor the suppliers of Testo are liable to pay compensation for any losses arising as a result of use of this Testo product or the inability to use this Testo product, even if Testo has been informed of the possibility of such a loss. This exclusion does not apply for losses occasioned through intent or gross negligence on the part of Testo. Claims founded on mandatory statutory provisions regarding product liability are likewise unaffected.

2. Installation



! Administrator rights are necessary for installation.

3 USB interface/adapter is not connected to the computer.

1 Insert CD-ROM.

If the installation program does not start automatically:

> Open My Computer, select the CD drive, double click on TestoSetup.exe.

- The question Do you want to allow the following program to install Software on this computer? is displayed.

2 Confirm with Yes.

- The assistant for the testo USB Driver setup appears.

3 Continue with Next.

- The status Installing testo USB Driver is displayed.

- The text Completed the testo USB driver Setup Wizard is displayed.

4 End installation with Finish.

3. Virtual COM port settings

! The following description applies only to testo 174 (0563 1741), testo 175 (0563 1754-1761), testo 177 (0563 1771-1775), testo 580 (0554 1778)

3 USB interface/adapter is connected to the computer, USB-driver and, if necessary, adapter-driver are installed.

For Windows 7®:

1 Select Start > Control Panel > System and Security > System > Device Manager.

For Windows 8.1®:

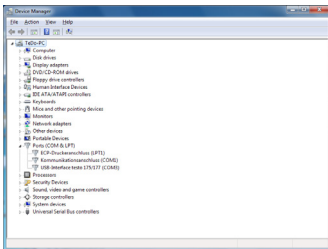
1 Select Start (right mouse button) > Device Manager.

For Windows 10®:

- 1 Select Start (right mouse button) > Device Manager.
- 2 Click on Ports (COM & LPT).
- The entries for this category are displayed.
- 3 Search for entries with „Testo ...“ ,followed by a COM interface number.


! You require this COM interface number when you connect the data logger to the Comsoft software.

! The COM interface number only remains the same if you always connect the USB interface to the same USB port, or if it is left connected.



4. Troubleshooting

Error report:

In the instrument manager  **USB-Interface testo 175/177** appears.

Cause:

Driver installation was not carried out correctly.

Error correction:

Re-install driver.

In Windows 7®:

Context menu Properties > Driver > Update Driver... > OK.

In Windows 8.1®

Context menu Properties > Driver > automatically

In Windows 10®

Context menu Properties > Driver > automatically.

If malfunctions occur which you cannot solve yourself, please contact your dealer or Testo customer service. For contact data see the rear of this document or www.testo.com



Testo SE & Co. KGaA

Testo-Straße 1

79853 Lenzkirch

Germany

Tel.: +49 7653 681-0

Fax: +49 7653 681-7699

E-Mail: info@testo.de

www.testo.de