

SLS are proud to break ground on our new National Distribution Centre

Scientific Laboratory Supplies (SLS) are excited to announce the planned move to a new, state-of-the-art National Distribution Centre based on the Fairham Business Park development in Clifton, Nottingham.

The new multi-million-pound facility, which is nearly 3 times bigger than the current SLS site and will ensure the business's plans for continued growth can be achieved looking forward well into the future. SLS will invest a further £3.5m with an extensive "fit out" process including new offices, mezzanine levels and warehouse automation.

The new site in Fairham is conveniently located down the road from SLS' current site in Wilford, allowing for a local transition to a new premises. Within easy reach of junction 24 of the M1, East Midlands Airport and adjacent to the NET Tram Park & Ride site, Fairham Business Park offers the perfect location for SLS within the locality of our current site, minimising disruption to their employees and partners.



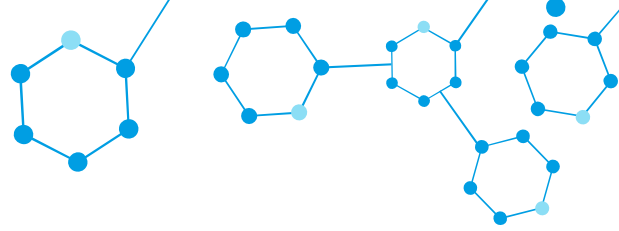
The SLS team 'breaking ground' on-site at Fairham.

By increasing the internal capacity by 180% for warehousing spaces, SLS will be capable of accommodating a larger and more varied stock holding in order to reduce customer lead times. The new order dispatch capacity is over 170% larger than SLS' current capability including new technology with automated warehouse picking and order packing systems. The accelerated investment in IT integration will also provide improved customer order visibility through enhanced order tracking and proof of delivery.

The pandemic has changed the way SLS think, and they have taken a new approach into the design of the new offices for the SLS site at Fairham. The office space will be significantly increased to accommodate a flexible working environment for their ever-increasing family of colleagues with a modern open-plan office layout. Open creative meeting spaces and discussions hubs will be located across the new site contributing to improved SLS employee well-being at work, whilst enhancing productivity.



Plans for the new National Distribution Centre in Nottingham.

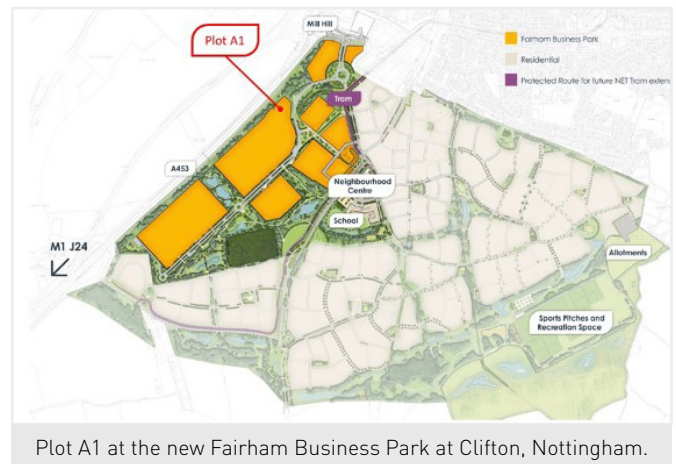


Fairham will be a place unlike any other; built from the ground up on the principles of sustainability, community and forward-thinking excellence. This 'clean slate' approach will redefine the modern neighbourhood. Mixing commercial and residential, living and working, it will establish itself as the benchmark for future developments, becoming the region's finest place to live, work and flourish. With more than 50 acres of employment space with outstanding connectivity and world-class opportunities for collaboration, Fairham Business Park offers one of the country's finest business environments. Where best in class spaces and truly global connectivity come together with outstanding opportunities for research, development, manufacture and logistics.

Managing Director Ian Roulstone, who can be seen in the picture breaking the ground on the new site in a momentous moment for the business commented "For over 30 years, SLS has been able to expand into our existing Nottingham facility to accommodate the growth we have achieved. That building has served us well, but the time has come for us to take a huge step forward in our development and position ourselves for further growth in the decades to come."

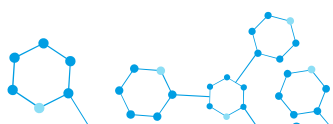


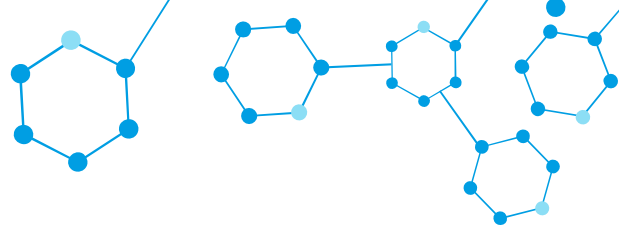
The facility will be nearly 3 times bigger than the current SLS site.



He added "Our new facility at Fairham will be state-of-the-art, tailored to the needs of our business and our employees, and part of an exciting new community that will be a pleasure to work from. Our customers and our suppliers can have faith in our improved efficiency and capacity and our staff will have a vastly improved working environment – one that we can all be proud to work in. As the building starts to take shape, we look forward to the exciting opportunities this facility will bring and to the continued success it will enable for SLS in the future."

The SLS National Distribution Centre building has been designed with sustainability at the forefront of the plans with a minimum BREEAM rating of 'Very Good', but the aim is to achieve 'Excellent'. There is a big focus on sustainable transport for employees and logistics. There will be 12 EV charging points, a bike shelter to hold 20 bikes as well as being just a one minute walk from the tram stop. Further sustainable features will include greater energy conservation techniques that come from modern builds as well as solar panels fitted to the exterior of the building.





About Scientific Laboratory Supplies Ltd

SLS first began trading in 1991 and has grown to become the UK's largest independent supplier of laboratory equipment, chemicals, and consumables. Headquartered in Nottingham, the company operates a warehousing, technical storage, and logistics service across the UK and in several international territories. SLS works closely with leading international industry brands through a market leading catalogue and an extended range of over 500,000 products.



Left-Right: Connor Prideaux, Tony Birtles, Bruce Mowbray and Ian Roulstone (SLS) joined by James Richards (Clowes), Anthony Jamison (Postins Project Services), Ben Hall (IMA Architects) and Tim Gilbertson (FHP).

